

FLO-Vu™ SIGHT FLOW INDICATORS

RCM

High performance sight flow indicators provide economical visual verification of flow.

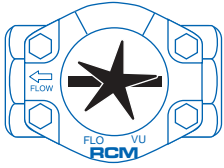
- **All Flo-Vu Indicators feature dual windows for *outstanding* visibility.**
- **Exclusive 5 year leak free guarantee.** Flo-Vu's static o-ring seal provides long-lived leak-free performance.
- **Maintenance-free Design**
Flo-Vu's bolted body design requires no periodic retorquing or tightening to maintain leak-free integrity. This is a safer and more reliable design than indicators using through bolts to fasten lens and seal to body.
- **Suitable for Severe Service**
All Flo-Vu's are designed to full ANSI standards and are conservatively rated to provide years of reliable service at pressures and temperatures from full vacuum to the published maximums.



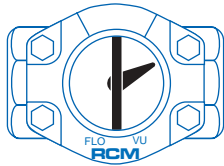
Series 4000 - Threaded



Series 5000 - Flanged



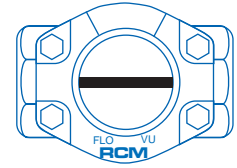
a. Propeller



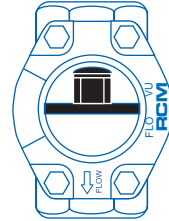
b. Bi-Directional - flapper

• Indicator Styles

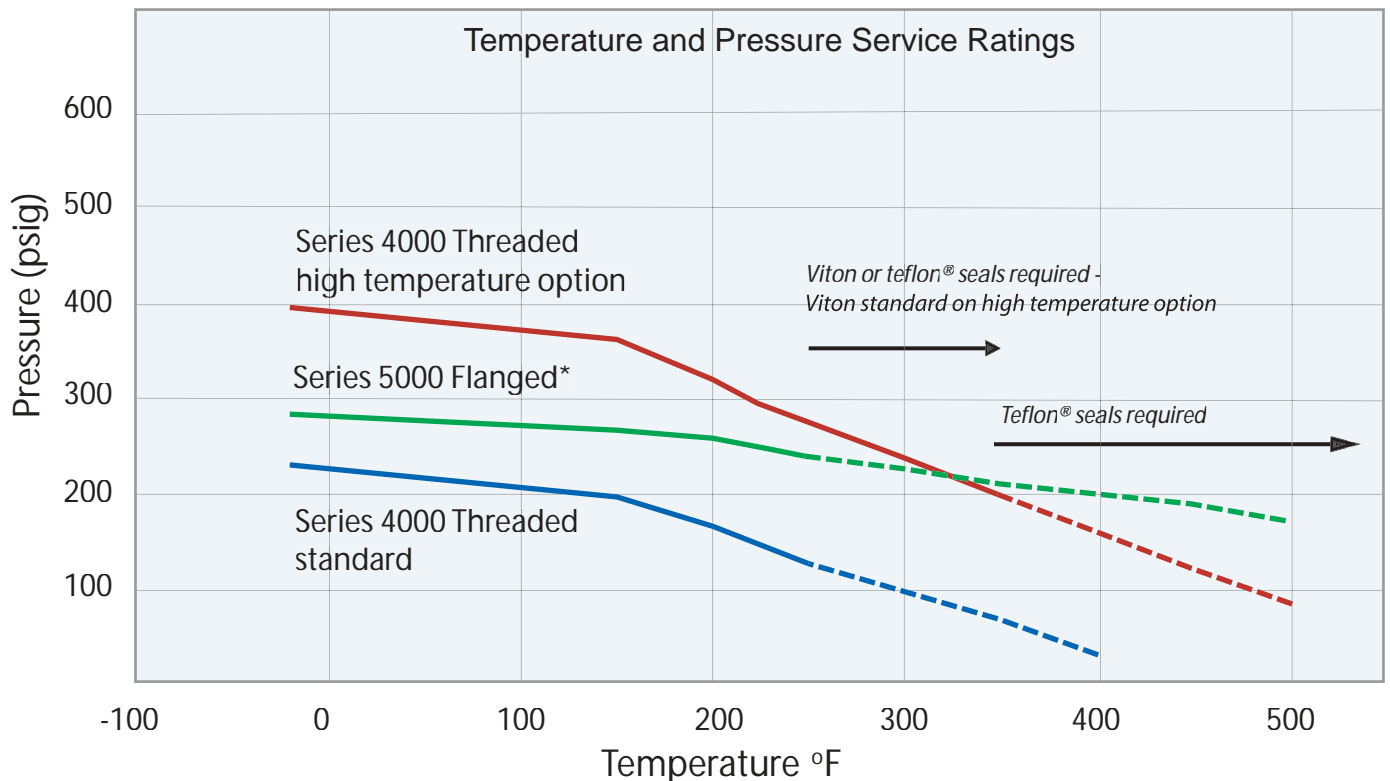
- a.. Propeller - the preferred style for opaque liquids. Specify flow direction, *to the Left* or *to the Right*. *To the Left supplied if not specified*. Maximum recommended flow rate 100 GPM.
- b. Bi-Directional - Flapper points in the direction of flow
- c. Bi-directional plain - observe color and clarity of fluid
- d. Drip Tube - for extremely low or intermittent flows. Keeps product from dripping on the glass. Install in vertical lines.



c. Bi-Directional - plain



d. Drip Tube



*Ratings for steel with ANSI B16.5 flange. See table for ratings of other materials and end connections.

Pressure and Temperature Ratings

Series 4000 Threaded FLO-VU™

Temperature		psig (Bar)		
(F)	(C)	Steel	316 SST	Ductile Iron
-20 to 150	-29 to 65	200 (13.8)	200 (13.8)	200 (13.8)
200	93	165 (11.4)	165 (11.4)	165 (11.4)
225	105	150 (10.3)	150 (10.3)	150 (10.3)
250	121	135 (9.3)	135 (9.3)	135 (9.3)
<i>With Optional Seals (see below)</i>				
300	149	100 (6.9)	100 (6.9)	100 (6.9)
350	177	70 (4.8)	70 (4.8)	70 (4.8)
400	204	35 (2.4)	35 (2.4)	35 (2.4)

Series 5000 Flanged FLO-VU™

Temperature		psig (Bar)		
(F)	(C)	Steel	316 SST	Ductile Iron
-20 to 150	-29 to 65	270 (18.6)	255 (17.6)	225 (15.5)
200	93	260 (17.9)	240 (16.6)	210 (14.5)
225	105	250 (17.2)	230 (15.9)	200 (13.8)
250	121	245 (16.8)	225 (15.5)	195 (13.4)
<i>With Optional Seals (see below)</i>				
300	149	230 (15.9)	215 (14.8)	180 (12.4)
350	177	215 (14.8)	205 (14.4)	165 (11.4)
400	204	200 (13.8)	195 (13.4)	150 (10.3)
450	232	185 (12.8)	180 (12.4)	135 (9.3)
500	260	170 (11.7)	170 (11.7)	120 (8.3)

Temperature Limits

Material	Degrees F	Degrees C
Seals		
Neoprene (standard)	-20 to 250	-29 to 121
Viton (incl. high temperature option)	-20 to 350	-29 to 177
Buna-N	-30 to 250	-34 to 121
EPT	-20 to 250	-29 to 121
Teflon®	-40 to 450	-40 to 232
Indicators		
Delrin	-40 to 250	-40 to 121
Ryton (incl. high temperature option)	-40 to 450	-40 to 232
Teflon®	-40 to 450	-40 to 232

Materials of Construction

Body:	Steel 316 Stainless Steel Ductile Iron Bronze	ASTM A216 WCB ASTM A351 CF8M ASTM A536 65-45-12 ASTM B62 83600
	<i>Optional Materials: Hastelloy, Alloy 20, Monel, others upon request</i>	
Windows:	Standard High Temperature	Tempered Soda Lime Tempered Borosilicate
Indicators:	Standard High Temperature	Delrin Ryton
	<i>Optional Materials:</i>	<i>Teflon®</i>
Seals:	Standard High Temperature	Neoprene (Std.) Viton (Std.)
	<i>See Ordering table for additional seal options.</i>	
Connections:	<i>(Series 4000 threaded)</i> Standard <i>Options</i> Socket Weld BSP	ANSI B1.20 FNPT ANSI B16.11 ANSI BS21
	<i>(Series 5000 flanged)</i> Steel 316 Stainless Steel Ductile Iron <i>Options</i>	ANSI B16.5 150lb.RF ANSI B16.5 150lb.RF ANSI B16.1 125lb.RF ANSI B16.5 300lb.RF
Options:	Shield Kit: Polycarbonate Pressure/Temperature Probe: Consult Factory	

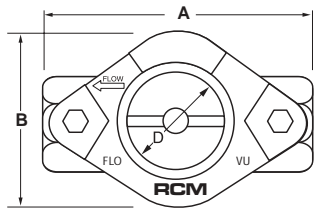
Ordering

Example: **2-44-1-BTS**

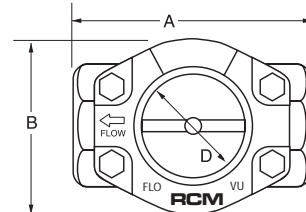
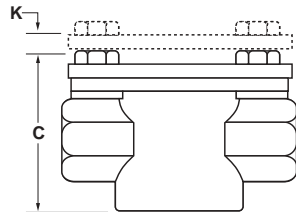
Size: 2 Inches*	Indicator Type: 0 Plain 1 Propeller 2 Flapper 3 Drip Tube
Series: 4 000 Threaded 5 000 Flanged	
Material: 1 Bronze 3 316 Stainless Steel 4 Carbon Steel 5 Ductile Iron	Options: A Viton seals B EPR seals B1 Buna-N seals B2 TFE seals T High Temp S Shield kit

* See dimension table page 4 for available sizes.

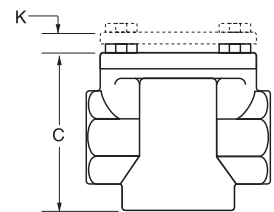
Dimensions for Flo-Vu™ - Series 4000



1/2" - 1"



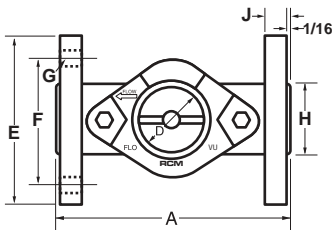
1-1/2" - 2"



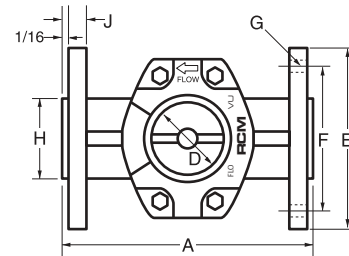
	1/2"		3/4"		1"		1-1/2"		2"	
	in.	mm	in.	mm	in.	mm	in.	mm	in.	mm
Overall Length	3 1/4*	83	4 1/4**	108	4 1/4**	108	5 1/4***	133	5 1/2***	140
B Overall Width	2	51	2 9/16	65	2 9/16	65	3 5/16	84	3 5/16	84
C Overall Height (std)	2 3/8	60	3 1/4	83	3 1/4	83	4 5/16	110	4 5/16	110
Overall Height (high pressure)	2 9/16	65	3 7/16	87	3 7/16	87	4 1/2	114	4 1/2	114
D Lens Diameter	1 1/8	29	1 1/2	38	1 1/2	38	2	51	2	51
K Added Height Due to Shield	7/16	11	1/2	13	1/2	13	1/2	13	1/2	13
Total Weight (lbs.) (kg.)	1.4	0.6	3.0	1.4	2.7	1.2	7.9	3.6	6.6	3.0

*Stainless steel units are 3 5/8" **Bronze units are 4 1/8" ***Stainless Steel units are 5 5/8"

Dimensions for Flo-Vu™ - Series 5000



3/4" - 1"



1-1/2" - 3"

	3/4"		1"		1-1/2"		2"		3"	
	in.	mm	in.	mm	in.	mm	in.	mm	in.	mm
A Overall Length	4 5/8	117	5	127	6 1/2	165	7 7/8	200	9 3/8	238
D Lens Diameter	1 1/2	38	1 1/2	38	2	51	2	51	3	76
E Flange Dia.	3 7/8	98	4 1/4	108	5	127	6	152	7 1/2	191
F Bolt Circle Dia.	2 3/4	70	3 1/8	79	3 7/8	98	4 3/4	121	6	152
G (#Bolt Holes) Size	(4) 5/8	(4)16	(4) 5/8	(4)16	(4) 5/8	(4)16	(4) 3/4	(4)19	(4) 3/4	(4)19
H Dia. of Raised Face	1 11/16	43	2	51	2 7/8	73	3 5/8	92	5	127
J Thickness of Flange	1/2	13	15/32	12	19/32	15	11/16	17	13/16	21
Total Weight (lbs.) (kg.)	5.2	2.4	5.4	2.4	11.1	5.0	15	6.8	29.3	13.3

RCM Industries, Inc.

110 Mason Circle, Bldg. D, Concord, CA 94520

Phone 925.687.8363 Fax: 925.671.9636

Toll Free: 800-flo-gage (800.356.4243)

www.flo-gage.com email: info@flo-gage.com

©2002 RCM Industries, Inc.
F-238 Rev A

1/2002