

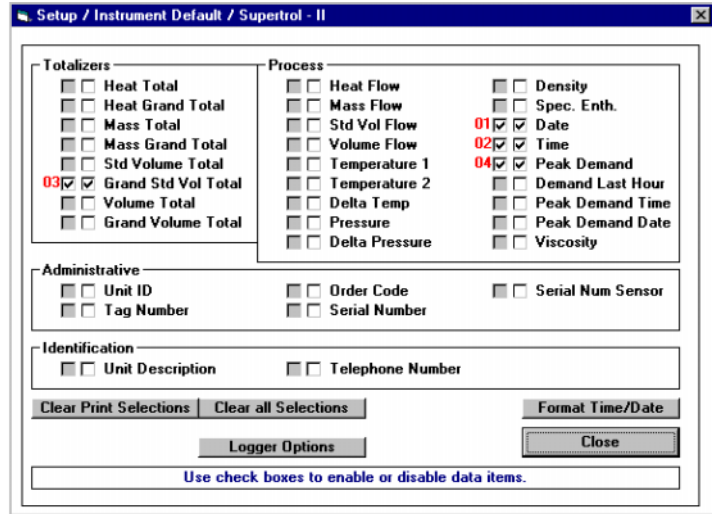
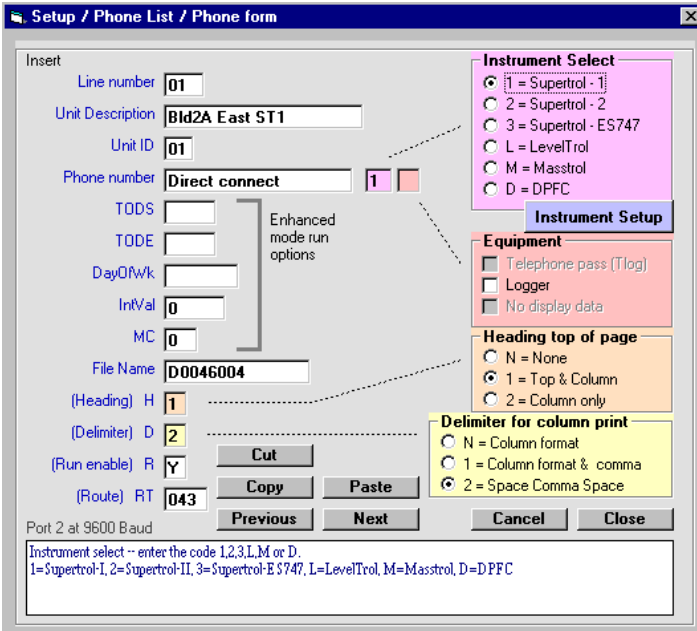
# TROLLink

## Remote Metering Software

- Retrieve data from KEP flow computers using direct wire or modem connection.
- Collects data from the following Kessler-Ellis Products flow computer instruments: SUPERTROL I, SUPERtrol II, ES-747, LEVELTROL II, MASSTROL, DPFC
- Runs on: Windows 95® and higher; Windows NT® 4.0 and higher
- Works with most Hayes compatible modems for remote data collection.
- Handles a mix of instruments, they don't have to be the same type.
- Select the data items to acquire by simple check boxes for each instrument.
- Manual and automatic data collection modes.
- Can automatically collect data from 1 to 100's of instruments.
- Automatic data collection by Time and Date.
- Automatic Telephone busy retries.
- Collected data can go to screen, text files and Excel spread sheets.
- Each instrument can have data directed to separate or common named files.
- Can write log files showing data collection session details and connection failures due to busy or no answers.
- Collects data from items that are displayable on instrument displays.
- Collects data from SUPERtrol and LEVELtrol II dataloggers.
- Automatic Peak Demand reset capability possible when using routes
- Each instrument can be assigned a route number to write special messages during data collection to data file.

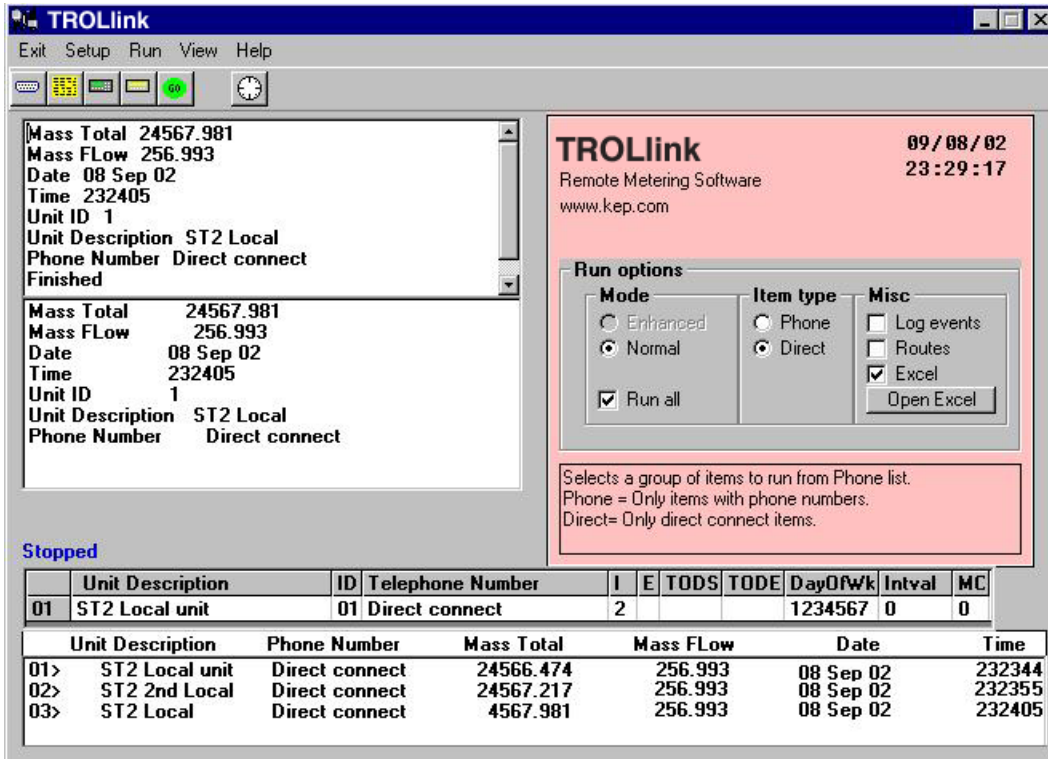


# EASY TO SETUP!



Setup is simple using check boxes and “fill in the blank” formats.

# EASY TO USE!



Within moments after setup you will be up and running and collecting your vital data. The data may be viewed on screen or saved as text or Excel™ Spreadsheet files