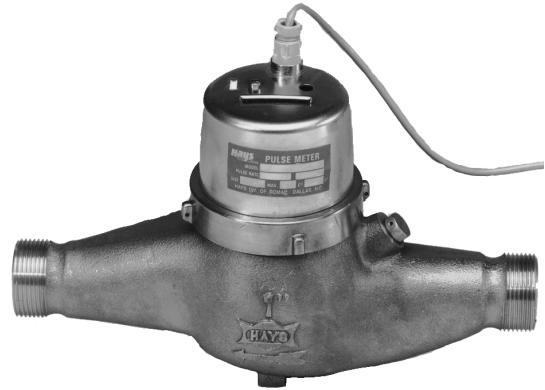


- Dry Dial Register
- For Hot Water use to 250° F (120° C)
- For Horizontal Installation
- Operating Pressure — 150 psi

	3/4"	1"	1 1/2"	2"
Maximum Flow - GPM	22	52	88	132
Minimum Flow - GPM	2	3.8	7	8.6



MRH Series
Sizes 3/4", 1", 1 1/2", 2"

MTH — Multi-Jet — Totalizing Only Hot Water

MRH — Multi-Jet — Reed Switch Sensor Hot Water
Uses Reed Switch to provide a dry contact closure to metering pumps and controls.
Does not require external power source.

SPECIAL FEATURES

Low Cost Accuracy

When accuracy is important but cost is a concern the HAYS "M" Series Flowmeter offers great value and accuracy you can depend upon.

Low Maintenance

High quality components insure performance for many years. Hermetically sealed register is exchangeable under pressure conditions. Maintenance is easier with less down time.

Wide Flow Range

HAYS "M" Series Flowmeter offers flow rates from .25 GPM to 130 GPM. This wide range gives flexibility to tailor the "M" Series Flowmeter to the task.

Sand and Debris Pass Easily

Measuring chamber designed for superior ability to pass sand and debris.

TYPICAL APPLICATIONS

- Boiler Water Treatment
- Proportional Feed
- Remote Totalizing

HOW TO ORDER

Specify: model, pulse rate and size

Pulse Rates

3/4", 1", 1 1/2", & 2"	
Gallons per Pulse	Pulses per Gallon
200	0.005
100	0.010
50	0.020
40	0.025
30	0.033
25	0.040
20	0.050
12.50	0.080
10	0.100
5	0.200
4	0.250
3	0.330
2.50	0.400
2	0.500
1.25	0.800
1	1.000
0.50	2.000
0.40	2.500
0.30	3.300
0.25	4.000

Model

MTH — Multi-Jet — Totalizing Hot Water

MRH — Multi-Jet — Reed Switch Hot Water

Temperature

H — Hot Water to 250° F (120° C)

Example: Hot Water Multi-Jet Meter 3/4" with a pulse rate of 2 gallons per pulse.

Order: MRH — 3/4" — 2 G/P

SPECIFICATIONS

Materials

Body: Bronze

Rotor and Gear Train: Thermoplastic, High Temperature

Magnet: Ceramic Permanent

Temperature:

Hot Water 250° F (120° C)

Maximum Operating Pressure: 150 psi

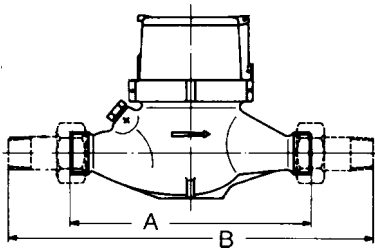
Accuracy: ± 1 1/2% of Reading

Sensor:

MRH — Reed Switch — Dry Contact Closure - 100 mA at 24 volts

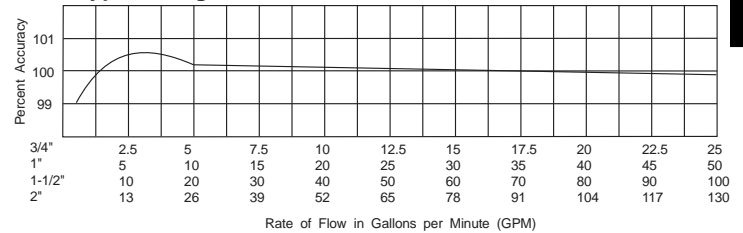
Cable Length: 6 feet (std.) 2,000 ft (max.). 24 awg unshield cable

TECHNICAL DATA

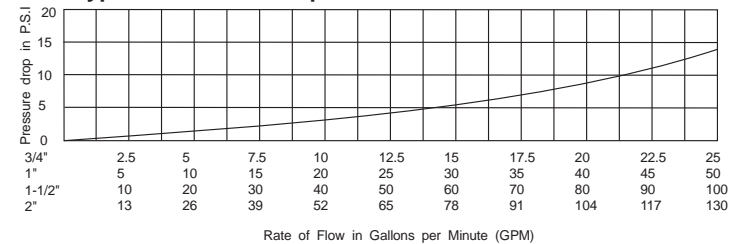


Dimensions		3/4"	1"	1-1/2"	2"
A	Meter - Straight Male Iron Pipe Threads				
		7 1/2"	10 1/4"	12 5/8"	10 5/8"
B	With Couplings (MNPT)				
		12 5/8"	16 1/8"	18 1/2"	16 7/8"
Thread Size		3/4"	1"	1-1/2"	2"
A	Meter - Straight Male Iron Pipe Threads				
		1"	1 1/4"	2"	2 1/2"
B	With Couplings (MNPT)				
		3/4"	1"	1 1/2"	2"

Typical Registration Curve



Typical Pressure Drop Curve



3-15

Electrical Connections:

HAYS Hot Water Pulse Meters are supplied with a six foot cable attached to the sensor specified.

MR Sensor Connection has two conductors

