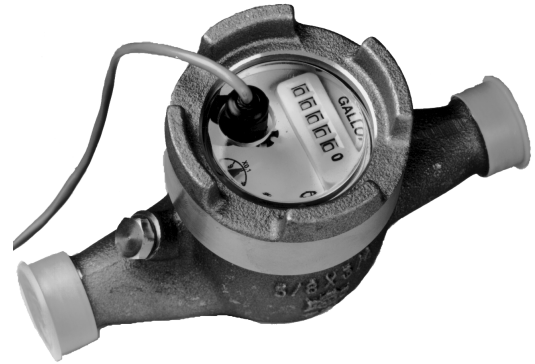


- | | 3/4 | 1 | 1-1/2" | 2" |
|----------------------|-----|-----|--------|-----|
| • Maximum Flow — GPM | 20 | 50 | 100 | 130 |
| • Minimum Flow — GPM | .25 | .75 | 1.5 | 2.0 |
- Maximum Operating Pressure — 150 psi
 - Maximum Operating Temperature — 105°F (40°C)
 - Also Available in Hot Water Applications
 - Wide Variety of Pulse Rates



"M" Series Meter
3/4", 1", 1½", 2"

MT — Multi-Jet — Totalizing Meter

ME — Multi-Jet — Hall Effect Sensor

Solid State Sensor for long life and highest reliability. This sensor requires a power source provided by metering pumps or electronic controls.

MR — Multi-Jet — Reed Switch

Uses Reed Switch to provide a dry contact closure to metering pumps and controls. Does not require external power source.

C or H — All HAYS "M" Series meters are available in (C) Cold water 105° F (40° C) and (H) Hot water 250° F (120° C).

SPECIAL FEATURES

Low cost accuracy

When accuracy is important but cost is a concern the HAYS "M" Series Flowmeter offers great value you can depend upon. With accuracy that is 1½% of reading above transition flow.

Low maintenance

High quality components insures performance for many years. The impeller and register are contained in a cartridge which can be serviced without taking the meter from the line. Maintenance is easier with less down time.

Wide flow range

HAYS "M" Series Flowmeter offers flow rates from .25 GPM to 130 GPM. This wide range gives flexibility to tailor the "M" Series Flowmeter to the task.

Gears lubricated for longevity

Water lubricated gears and internals provide long life and dependable service.

Sand and debris pass easily

Measuring chamber designed for superior ability to pass sand and debris.

TYPICAL APPLICATIONS

- Cooling Tower Treatment
- Boiler Water Treatment
- Proportional Feed
- Remote Totalizing
- Metering Pump Pacing
- Water Conservation
- Automatic Regeneration

HOW TO ORDER

Specify: model, size, temperature and pulse rate

Model

- MT** — Multi-Jet — Totalizing Only
- ME** — Multi-Jet — Hall Effect Sensor
- MR** — Multi-Jet — Reed Switch Sensor

Temperature

- C** — Cold Water to 105° F (40° C)
- H** — Hot Water to 250° F (120° C)

Pulse Rates

3/4"		1"		1 1/2"		2"	
Gallons per Pulse	Pulses per Gallon	Gallons per Pulse	Pulses per Gallon	Gallons per Pulse	Pulses per Gallon	Gallons per Pulse	Pulses per Gallon
40	0.025	40	0.025	10	0.10	13	0.077
35	0.029	35	0.029	13	0.077	10	0.10
18	0.056	18	0.056	7	0.143	7	0.143
33	0.03	33	0.03	5	0.20	5	0.20
25	0.04	25	0.04	4	0.25	4	0.25
20	0.05	20	0.05	3.30	0.30	3.30	0.30
10	0.10	10	0.10	2.50	0.40	2.50	0.40
8	0.125	8	0.125	2	0.50	2	0.50
5	0.20	5	0.20	1	1	1	1
4	0.25	4	0.25	0.80	1.25	0.80	1.25
3.30	0.30	3.30	0.30	0.50	2	0.50	2
2.50	0.40	2.50	0.40	0.40	2.50	0.40	2.50
2	0.50	2	0.50	0.33	3	0.33	3
1	1	1	1	0.25	4	0.25	4
0.80	1.25	0.80	1.25	0.20	5	0.20	5
0.50	2	0.50	2	0.10	10	0.10	10
0.40	2.50	0.40	2.50	0.08	12.50	0.08	12.50
0.33	3	0.33	3	0.05	20	0.05	20
0.25	4	0.25	4	0.04	25	0.04	25
0.20	5	0.20	5	0.033	30	0.033	30
0.10	10	0.10	10	0.025	40	0.025	40
0.08	12.50	0.08	12.50	0.02	50	0.02	50
0.05	20	0.05	20	0.01	100	0.01	100
0.04	25	0.04	25				
0.033	30	0.033	30				
0.025	40	0.025	40				
0.02	50	0.02	50				
0.01	100	0.01	100				

Example: 3/4" Multi-Jet with Hall-Effect Sensor in a cold water application with a pulse rate of 10 pulses/gallon.

Order: ME — C — 3/4"-10 P/G

SPECIFICATIONS

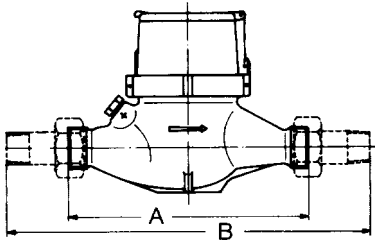
Materials

- Body:** Bronze
- Rotor and Gear Train:** Thermoplastic
- Magnet:** Ceramic Permanent
- Temperature:**
 - Cold Water 105° F (40° C)
 - Hot Water 250° F (120° C)
- Maximum Operating Pressure:** 150 psi
- Accuracy:** ± 1 1/2% of Reading

Sensor:

- ME** — Solid State — Hall Effect - 6 - 24 VDC. 20 mA max. current sinking output
- MR** — Reed Switch — Dry Contact Closure - 100 mA at 24 volts
- Cable Length:** 12 feet (std.) 2,000 ft (max.)

TECHNICAL DATA



Dimensions	3/4"	1"	1-1/2"	2"
A Meter -Straight Male Iron Pipe Threads	7 1/2"	10 1/4"	12 5/8"	10 5/8"
B With Couplings (MNPT)	12 5/8"	16 1/8"	18 1/2"	16 7/8"
Thread Size	3/4"	1"	1-1/2"	2"
A Meter - Straight Male Iron Pipe Threads	1"	1 1/4"	2"	2 1/2"
B With Couplings (MNPT)	3/4"	1"	1 1/2"	2"

Electrical Connections:

ME Sensor Connection has three conductors



MR Sensor Connection has two conductors

