

Digital Register for C700

Sizes 5/8" - 2"



Materials

Pulser can:	Copper Alloy, 90%
Pulser lens:	Glass or Plastic
Pulse Element:	10W Reed Switch, 100 Ohm Resistor
Gland/Cable:	5 to 25 ft. cable can be supplied. 3-Wire standard with glass lens for RF capability. No cable supplied with plastic lens.

Contact Closure	Cont/USG	Cont/Cu ft.	Cont/litres
5/8"	1/1	1/0.1	1/1 or 1/10
3/4"	1/1	1/0.1	1/1 or 1/10
1"	1/1	1/0.1	1/10
1 1/2"	1/10	1/1	1/10
2"	1/10	1/1	1/10 or 1/100

Registration: 1 Revolution of Sweep Hand

	USG	Cu ft.	Litres
5/8"	10	1	10 or 100
3/4"	10	1	10 or 100
1"	10	1	100
1 1/2"	100	10	100
2"	100	10	100 or 1000

Capacity (millions)

	USG	Cu ft.	Litres
5/8"	10	1	10 or 100
3/4"	10	1	10 or 100
1"	10	1	100
1 1/2"	100	10	100
2"	100	10	100 or 1000

Electrical Ratings

Maximum Voltage:	50 VDC
Maximum Current:	50 mA
Duty Cycle	50±15% (Closed/Open)

Note: These units are NOT repairable.



The Digital Register may be used with Elster AMCO Water's C700 positive displacement cold water meters, sizes 5/8" - 2". This register provides a volt-free reed switch closure for a specific volume of metered water (see specifications). The actual pulse resolution and units of registration are printed on the dial plate.

Elster AMCO's Digital Register is available with either a plastic or glass lens register and can be ordered as part of the meter or as a retrofit to an existing C700 meter. Glass lens units are suited to long-term submersion (pit) applications and are supplied with 5 to 25 feet of 3-wire cable. Electrical connections are not polarity sensitive and are to be made using two wires connected in series to the internal reed switch and a 100 Ohm resistor (see schematic on reverse). The pulse unit requires power from an external source and is suitable for use with remote counters.

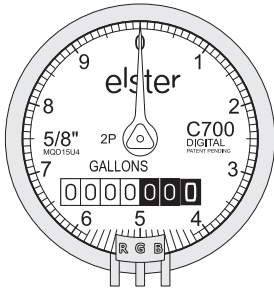


C700 Dimensions and Net Weights

Size	Dimensions (inches)						Weight lbs.)	Bolt Hole Dia.
	A	B	C	D	E	F		
5/8" x 1/2"	7 1/2	5 1/2	1 1/2	4	9 1/4	3 3/4	4 1/4	
5/8" x 3/4"	7 1/2	5 1/2	1 1/2	4	9 1/4	3 3/4	4 1/4	
3/4" x 3/4"S	7 1/2	6 3/16	2 1/16	3 7/8	10	3 3/4	5	
3/4" x 3/4"	9	6 3/16	2 1/16	3 7/8	10	3 3/4	5 1/8	
3/4" x 1"	9	6 3/16	2 1/16	3 7/8	10	3 3/4	5 1/8	
1"	10 3/4	6 5/8	2 1/8	6 15/16	7 1/8	3 3/4	10 1/2	
1 1/2" Oval	13	8 7/8	2 1/8	8 1/2	9 3/8	3 3/4	24	3/4"
1 1/2" Threaded	12 5/8	8 7/8	2 1/8	7 1/2	9 3/8	3 3/4	22	
2" Oval	17	8 1/8	1 3/4	8 3/4	8 5/8	3 3/4	39	3/4"
2" Threaded	15 1/4	8 1/8	2 15/16	8 3/4	8 5/8	3 3/4	36	

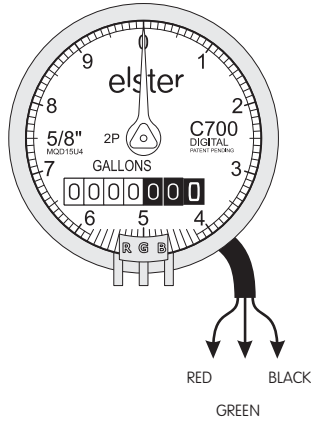
Plastic Version

(Shown with black plastic cover removed)



Glass Version

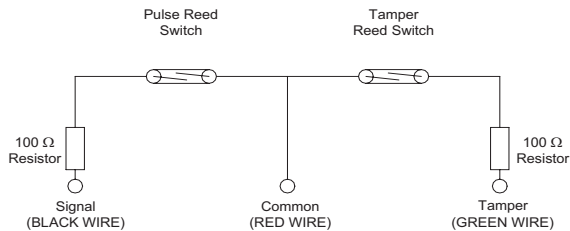
(Shown with 3 pre-connected and potted wires for AMR applications)



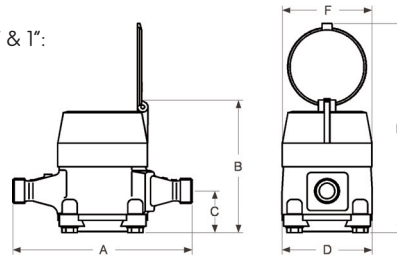
User-Defined Wire Color

RED
BLACK
GREEN

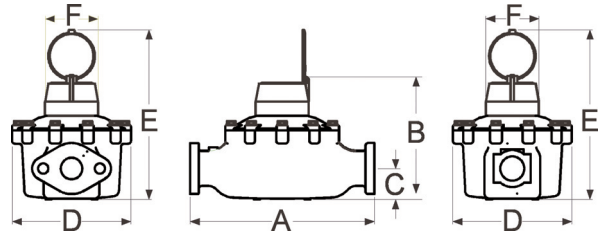
A maximum run length of 50 feet is recommended, however runs up to 500 feet are possible if shielded cabling is routed away from electromagnetic sources. Cable sizes from 24-32 AWG are acceptable. Wiring is not polarity sensitive (see schematic below).



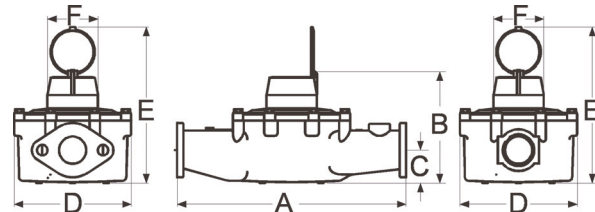
5/8", 3/4" & 1":



1 1/2":



2":



Elster AMCO Water, Inc.
PO Box 1852
Ocala, FL 34478-1852
United States

T +1 800 874 0890 (US)
T +1 866 703 7582 (Canada)
T +1 787 872 2006 (Caribbean)
F +1 352 368 1950

watermeters@us.elster.com
www.elster.com

© 2007 by Elster. All rights reserved.

The company's policy is one of continuous product improvement and the right is reserved to modify the specifications contained herein without notice. These products have been manufactured with current technology and in accordance with applicable AWWA Standards.

DR-C700/10-07