



## Intelligent Converter

Installation and Operation Manual - *Preliminary*



Frequency-to-Current/ Frequency-to-Voltage Converter  
For use with Blancett Model 1100 Series Turbine Flow Meters

Blancett Flow Meters • A Division of Racine Federated Inc.  
100 East Felix Street South, Suite 190 • Fort Worth, Texas 76115-3548  
1-800-235-1638 • FAX: 1-817-921-5282  
[www.Blancett.com](http://www.Blancett.com)

## Introduction

The Active Sensor is a state-of-the-art, microprocessor based device designed to provide exceptional accuracy at a very affordable price. Designed for use with Blancett Turbine Meters, the sensor measures and calculates the flow rate to produce an analog current or voltage output representative of the meter's flow rate.

The Active Sensor is offered in two versions:

- The F to I converter provides a 4-20mA output in a two wire, loop powered, setup.
- The F to V converter offers a 0-5 VDC output for those applications where a voltage output is preferred.

Specifications:	F to I	F to V
<b>Power:</b>	Loop powered, 6 V insertion loss maximum 10 to 30 VDC supply range	10 to 30 VDC supply range
<b>Inputs:</b> Frequency Trigger Sensitivity Frequency Measurement Accuracy	Magnetic Pickup 0 to 3500 Hz 30 mV p-p ±1%	Magnetic Pickup 0 to 3500 Hz 30 mV p-p ±1%
<b>Analog Output:</b> Resolution Temperature Drift	4 to 20 mA current loop 1:4000 50 ppm / °C (max)	0 to 5 VDC 1:4000 50 ppm / °C (max)
<b>Environmental:</b> Ambient Temperature Humidity	-22 °F to 158 °F (-30 °C to 70 °C) 0-90% non-condensing	-22 °F to 158 °F (-30 °C to 70 °C) 0-90% non-condensing

## Connection

The 4-20mA output can drive auxiliary devices (resistive loads) such as displays, recorders and computers, provided that the voltage supplied by the power supply is adequate. Devices must be wired in series with the F to I converter and power supply. The voltage drop across the load(s) and the 6VDC minimum needed to drive the F to I converter determines the minimum voltage required from the power supply.

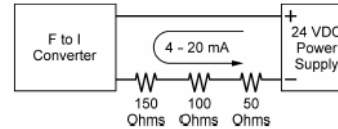
Determine the necessary voltage required to adequately drive the F to I converter and auxiliary device(s).

The F to I converter acts as a current controlling device. Thus, the current output remains the same even if the power supply voltage fluctuates or the load resistance changes. The current varies only with respect to the flow rate from the turbine flow meter, as long as the voltage drop across the F to I converter is at least 6VDC.

The load(s) in the circuit will generally have some electrical resistance, 100 ohms for this example. The 4-20mA loop current will produce a voltage drop across each load. The maximum voltage drop across a load(s) will exist when the loop current is 20mA. The power supply must provide enough voltage for the load(s) plus the 6VDC minimum insertion loss of the F to I converter.

### Example 1

Sufficient Power Supply Voltage



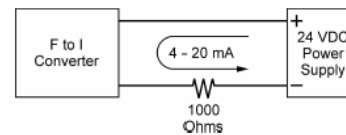
Total Load Resistance = 300 ohms  
At 20 mA loop current, the voltage drop across the load(s)  
is 6 volts:

$$300 \text{ ohms} \times 20 \text{ mA} = 6,000 \text{ mV or } 6 \text{ volts}$$

Subtract 6 volts from the 24 volt source to determine that 18 volts is available to power the F to I converter. The 18 volts is within the specified 10 to 30 volt range and is sufficient to power the F to I converter.

### Example 2

Insufficient Power Supply Voltage



Total Load Resistance = 1000 ohms  
At 20 mA loop current, the voltage drop across the load(s)  
is 14 volts:

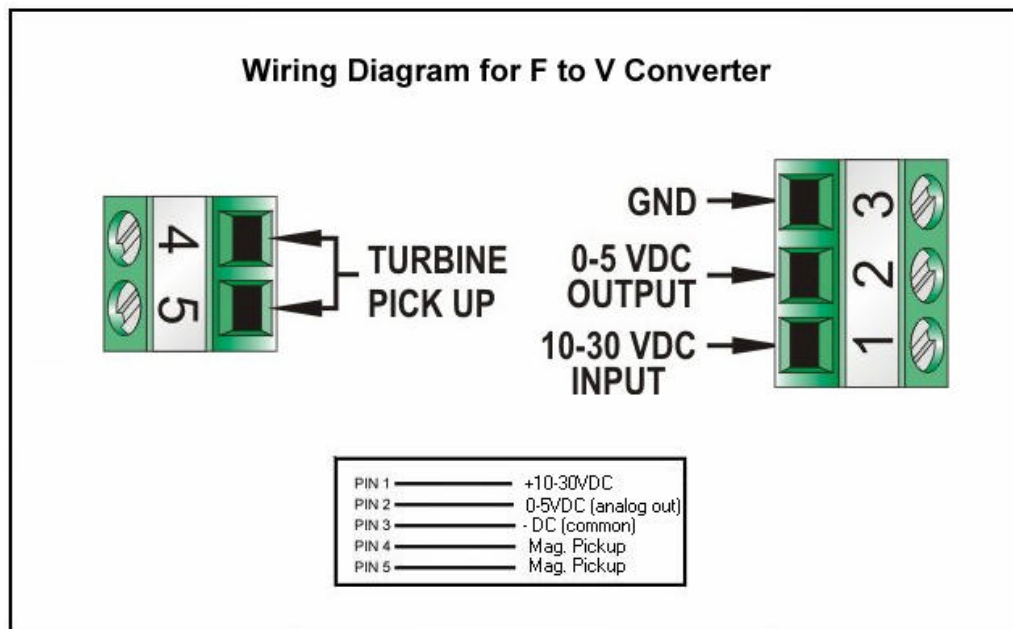
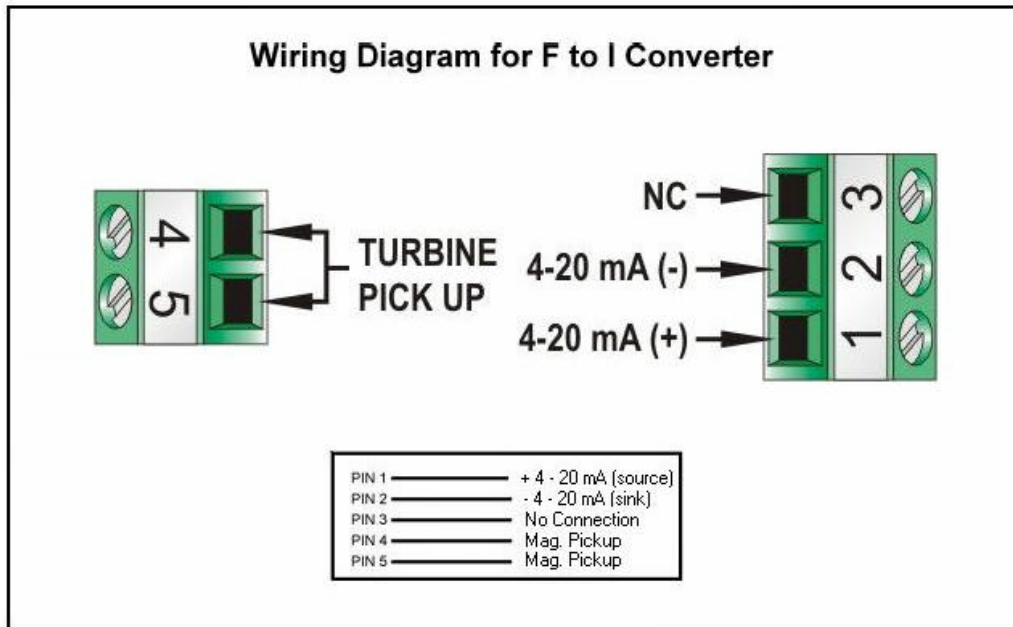
$$1000 \text{ ohms} \times 20 \text{ mA} = 20,000 \text{ mV or } 20 \text{ volts}$$

Subtract 20 volts from the 24 volt source to determine that 4 volts is available to power the F to I converter. The 4 volts is below the specified 10 to 30 volt range and is **not** adequate to power the F to I converter. If for example, the power supply voltage was 30 volts instead of 24 volts, the voltage available to power the F to I converter would be 10 volts and within the specified range.

## Operation

As soon as power is applied, the converter will begin to output an analog value representative of the measured frequency from the turbine meters.

Refer to the wiring diagram that corresponds to the converter that you have selected for your application.



## Calibration - Preliminary

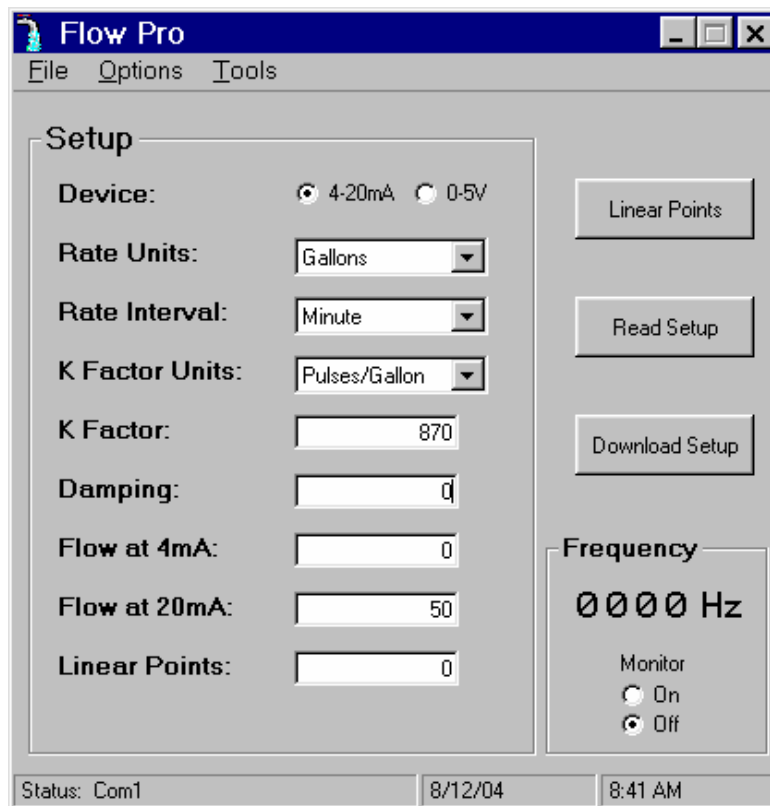
**Note:** If your Intelligent Converter was purchased with a Blancett Turbine Meter, the two components ship from the factory, calibrated as a set. If the active sensor is a replacement, the turbine's K-Factor has changed, or the converter is being used with some other pulse-generating device, programming will be necessary.

### Requirements:

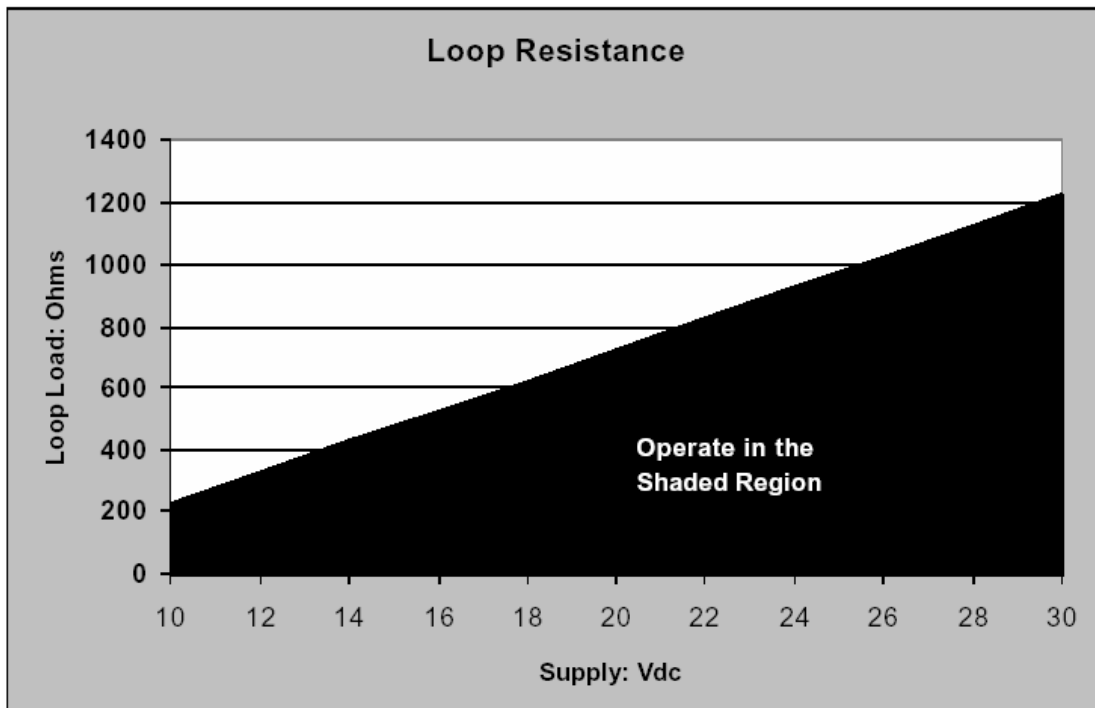
1. IBM Compatible PC running Windows 95 and newer.
2. Programming Cable
3. Programming Software
4. DC Power Supply

After installing the programming software and attaching the programming cable to the Intelligent Converter through an available Com Port on your PC you are now ready to power up your Intelligent Converter and continue with the calibration procedure. Using a DC power supply, apply 10-30VDC to the Intelligent Converter. Run the "Flow Pro" Software.

## Software Screenshot



Pressing the “Read Setup” button will read the current configuration of your sensor. **Note: If communication fails, please check cabling and/or Com Port Address and try again.** After entering your desired values for; Device Type, K-Factor, Rate, and Flow Span, press the “Download Setup” button to save your settings. Please consult the factory for any further calibration requirements.



## Troubleshooting

## Maintenance

<p><b>1. No Current Output</b></p> <ul style="list-style-type: none"> <li>a) Check polarity of the current loop connections for proper orientation.</li> <li>b) Make sure receiving device is configured to provide loop current.</li> </ul>	<p><b>WARNING: Always disconnect primary power source before inspection or service.</b></p>
<p><b>2. Analog output reads a constant reading</b></p> <ul style="list-style-type: none"> <li>a) Make sure there is flow in the system.</li> <li>b) Verify that the rotor inside the turbine meter turns freely</li> </ul>	<p>1. A schedule for maintenance checks should be determined based upon environmental conditions and frequency of use. Inspect at least once a year.</p>
<p><b>3. Analog output is not stable</b></p> <ul style="list-style-type: none"> <li>a) External noise is being picked up by the sensor. Keep all AC wires separate from DC wires.</li> <li>b) Check for radio antenna in close proximity. This usually indicates a weak signal.</li> </ul>	<p>2. Perform visual, electrical and mechanical checks on all components.</p> <ul style="list-style-type: none"> <li>a) Visually check for undue heating evidenced by discoloration of wires or other components, damaged or worn parts, or excessive corrosion of the device.</li> <li>b) Electrically check to make sure that all connections are clean and tight and that the device is operating properly.</li> </ul>

## Accessories

## Part Numbers

Aluminum Y-Enclosure	
Pickup Cable	
Complete Programming Package	
Programming Cable	
TTL Converter	



**Blancett Flow Meters  
100 E. Felix Street South  
Suite 190  
Fort Worth, Texas 76115 USA  
Toll Free 800.235.1638  
Phone 817.920.9998  
Fax 817.921.5282  
[www.blancett.com](http://www.blancett.com)**

Blancett Flow Meters • A Division of Racine Federated Inc.  
100 East Felix Street South, Suite 190 • Fort Worth, Texas 76115-3548  
1-800-235-1638 • FAX: 1-817-921-5282  
[www.Blancett.com](http://www.Blancett.com)