

6. Maintenance

6.1

Dirt trap

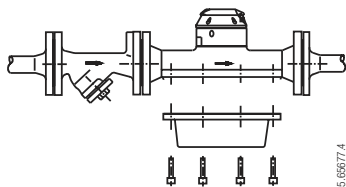
Dirt traps must be cleaned periodically, initially at short intervals.

When opening the dirt trap please pay attention to points 2.3. When putting back into operation watch points 4.1...4.4 of these instructions.

6.2

Meter, spare parts

Check connections periodically for tightness and if necessary tighten again. For control and cleaning, the measuring chamber and the ring piston of the meters DN15 ... 50 can be removed without demounting the meter off the pipe.



Torque of measuring chamber screws		
Flow meter	Screws	Torque
DN 15,20	M 6	6 Nm
DN 25	M 8	16 Nm
DN 40	M 12	47 Nm
DN 50	M 16	100 Nm

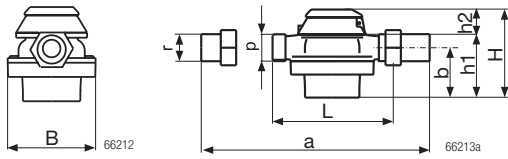
The cleaning and revision cycle depends largely on the conditions of operation. Under favourable conditions 5 ... 10 years are sufficient. Check the units for corrosion. When ancillary equipment is used, observe their mounting and operation instructions.

Spare part-lists may be requested from Aquametro.

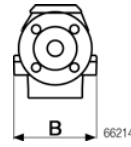
7. Dimensional sketches

VZE/VZO/VZEA/VZOA measuring units

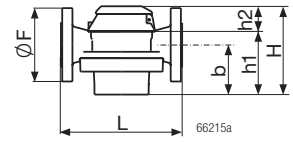
DN15, 20, 25 with threaded ends



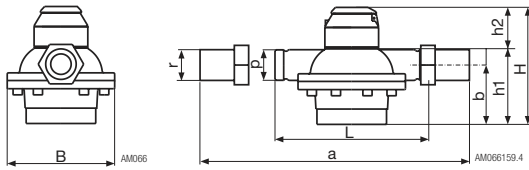
DN15, 20, 25 with flanges



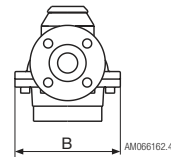
DIN 2501/SN 21843



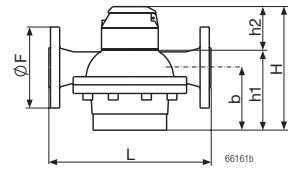
DN40 with threaded ends



DN40, 50 with flanges



DIN 2501/SN 21843

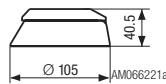


Nominal width	L	B	a	Ø F	b	h1	p	r
DN15	165	105	260	95	45	65	G 3/4"	G 1/2"
DN20	165	105	260	105	54	74	G 1"	G 3/4"
DN25	190	130	305	115	77	101	G 1 1/4"	G 1"
DN40	300	210	440	150	116	153	G 2"	G 1 1/2"
DN50	350	280	—	165	166	209	—	—

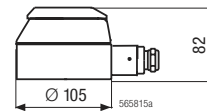
Dimensions in mm

VZE/VZEA Ancillaries

Electronic display

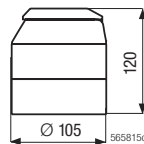


Electronic display and
INA pulser

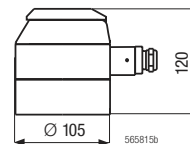


T max. 70° C

Electronic display



Electronic display and
INA pulser



T max. 130° C bzw.
T max. 180° C

VZO/VZOA measuring unit

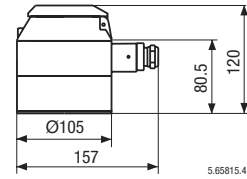
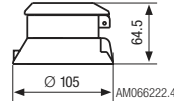
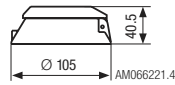
VZO 15, 20, 25

Roller register

Roller register with
RV pulser

Roller register and
IN pulser

T max. 130° C



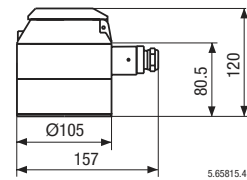
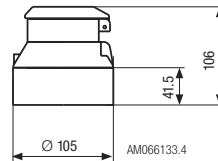
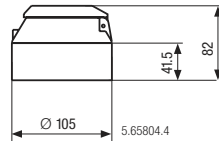
VZO 40, 50
VZOA 15 ... 50

Roller register

Roller register with
RV pulser

Roller register and
IN pulser

T max. 130° C



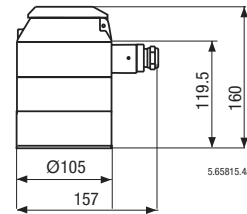
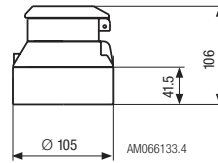
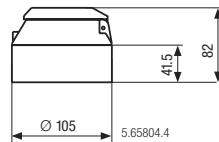
VZO 15 ... 50
VZOA 15 ... 50

Roller register

Roller register with
RV pulser

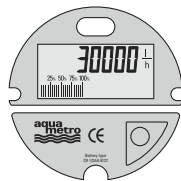
Roller register and
IN pulser

T max. 180° C



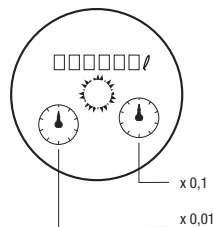
Electronic display/dial

VZE/VZEA

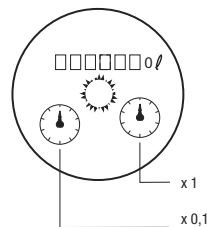


66017.4a

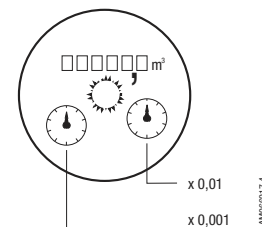
VZO/VZOA 15



VZO/VZOA 20, 25, 40



VZO/VZOA 50



AM066017.4